

INTO THE WOODS

NEW ENGLAND FORESTRY FOUNDATION | ANNUAL REPORT 2021

INVESTING IN THE FUTURE
PAGE 3

Financial Profile

PAGE 5

CONSERVATION REPORT
PAGE 7

NEFF INITIATIVES
PAGE 9

PINGREE EASEMENT'S
20TH ANNIVERSARY
PAGE 13

OUR DONORS
PAGE 15



NEW ENGLAND
FORESTRY
FOUNDATION



Board of Directors

PRESIDENT

Philip Y. DeNormandie

VICE-PRESIDENT

Frederick J. (Rick) Weyerhaeuser

TREASURER

Robert W. Ackerman

CLERK

Anne Stetson

ADDITIONAL DIRECTORS

Laurence (Larry) Band

Whitney (Whit) Beals

Christopher (Chris) di Bonaventura

Cameron Brandt

Andrea (Andi) Colnes

Frederick (Rick) Findlay

Michael Lehner

G. Montgomery (Monty) Lovejoy III

David (Tracy) Moskovitz

Jacqueline Perry O'Connor

Robert (Bob) Perschel

Todd Rodman

John van der Stricht

Byron Stutzman

Elizabeth Swain

HONORARY BOARD MEMBER

Bayard Henry



**NEW ENGLAND
FORESTRY
FOUNDATION**

32 Foster Street | P.O. Box 1346

Littleton, MA 01460

978.952.6856 | newenglandforestry.org

This publication is printed on Monadnock Astrolite PC 100, a third-party certified, 100% post-consumer recycled paper, produced using 100% clean, renewable electric power. Astrolite PC 100 is an environmentally responsible choice.

Many thanks to Monadnock Paper Mills of Bennington, NH for their support in this endeavor.

Exemplary Forestry and *Exemplary Forest Management* are trademarks of New England Forestry Foundation, Inc.

Dear Members and Friends,

This Executive Director's letter is about hope. We always need hope and now, more than ever, the ability to see a clear path forward to success. I say this because sometimes the news is distressing. Heat waves in the west, the highest temperature ever recorded. Wild fires that dim the skies in New England; massive flooding in Europe and China. The hallmarks of a changing climate surround us. Can we respond?

I think we can, particularly here in New England. When my own hope begins to dim, I think back to a vision of land protection for New England's Northern Forest put forward by the Northern Forest Alliance (NFA) in 1997. The NFA was a group of 50-plus conservation organizations working from Maine to New York. At the time, I was the Chairperson, and an employee of The Wilderness Society, and New England Forestry Foundation (NEFF) was a valued member of the NFA. Our vision was to protect 10 large landscapes in the region that had special cultural and environmental significance. We called these areas Wildlands, and protecting them meant keeping the forest in a natural state with some of the lands well-managed and other acres set aside for no harvesting. In many ways it was the precursor to the Wildlands and Woodlands Vision that developed over the following decade and lays out a vision for all of New England.

Our NEFF staff recently took the original NFA maps of Wildlands land protection from 1997 and updated them to show how far we have come. Those maps are in this newsletter, so if you want some hope, take a look at page 14. Although we are not done protecting these areas, you will see the huge conservation success that has already been achieved. And now with a climate emergency before us, we need to accelerate and continue this legacy of land conservation success more quickly than ever before. I think we can do it, and NEFF will help lead the way through our Forest-to-Cities Climate Challenge (forestcities.org).

It took many partners to achieve the success depicted in the Wildlands maps. NEFF played a major role in that success through our 762,000-acre Pingree easement and our 335,000-acre Downeast Lakes Forestry Partnership easements. This year we celebrate the 20th anniversary of the Pingree easement, which was the first large working forest easement, and helped set the stage for a new wave of land protection that is still underway. This newsletter contains an interesting look back at how the easement came about, with some inside facts and observations from NEFF Board of Directors members and staff who worked on the project.

NEFF is proud of our historical conservation milestones. We helped bring the practice of forestry and the advent of professional consulting foresters to New England. We were the first to show that large-scale easements were instrumental and feasible conservation approaches for large landscapes. And now we turn our attention to our greatest challenge—land conservation and Exemplary Forestry™ in an era of climate change.

Some like to say that "hope is not a plan." I would agree. At NEFF, we have hope and a plan.

Robert Perschel,
Executive Director

3

INVESTING IN THE FUTURE

5

FINANCIAL PROFILE

7

CONSERVATION REPORT

9

NEFF INITIATIVES

13

PINGREE EASEMENT'S 20TH ANNIVERSARY

15

OUR DONORS



Photo by Frank Lowenstein

NEFF Receives Tree Farm Award

The New Hampshire Tree Farm Committee has recognized the oldest Tree Farms in each of the state's counties, and NEFF's Lincoln Davis Memorial Forest is Hillsborough County's oldest, with a first registration date in 1955. The Tree Farm Committee presented NEFF with a 50 Year sign on June 21, and then NEFF staff, Board of Directors members, and supporters took a walk through the property with New England Forestry Consultants forester Dan Reed to see the results of recent forest management activities. Our thanks to the New Hampshire Tree Farm Committee!



Photo by Charlie Reinertsen.

DONOR PROFILE

Dick and Cynthia Perkins have spent decades appreciating, living alongside, and working to protect New England's forests.



Dick and Cynthia Perkins out in the woods.

INVESTING IN THE FUTURE

WRITING BY NEFF Communications Manager Tinsley Hunsdorfer

Cynthia moved to Massachusetts from California in 1970, and first explored the region's woodlands when she and her children went out searching for wildflowers and other wonders in nearby forests. Dick spent much of his youth roaming the Vermont forest, and has always felt a close connection to the country and the woods—a connection that has shaped his career and led him to volunteer with and serve on the boards of several land conservation organizations, including NEFF.

When it came time to decide the fate of their well-loved, 88-acre Royalston forestland, Dick and Cynthia's first priority was leaving it in the hands of an organization they trusted to manage it well, and their second was to use the donation to help get NEFF's new Pooled Timber Income Fund (PTIF) off the ground.

After carefully consulting with NEFF's conservation department, Dick and Cynthia donated the land—now called Perkins Woodlands (see page 7)—to NEFF, and the land's timber to the PTIF in May 2020.

This summer, NEFF staff members spoke with Cynthia and Dick about how a long-running relationship with NEFF and their shared commitment to conserving forests led to this generous gift.

“I Always Wanted to Be a Forester”

While both Dick and Cynthia describe themselves as avid hikers who enjoy being in the woods, Dick has long had a particular fascination with forestry and working forests.

In 1968, Dick and two acquaintances with forestry backgrounds founded LandVest, a real estate company that in part specializes in the sale and management of timberland; one of these co-founders, Mike Whitney, had previously worked as a NEFF forester. In LandVest's fledgling years, Dick reached out to then-NEFF Executive Director John T. Hemenway for assistance in establishing the company and its land management program. Or, in Dick's words, “John helped carry us through the company's first winter.”

“I always wanted to be a forester,” Dick said. “Working with people like John and getting trained, professional foresters out onto the timberland LandVest managed was the next best thing.”

Dick became more formally involved with NEFF when former NEFF Deputy Director Tim Storrow contacted him in

The lands and structures surrounding Dick and Cynthia Perkins' beautiful house.



2003 about purchasing headquarters for the organization. Dick was in the process of listing the Prouty family's Littleton-based house and lands through LandVest, and put NEFF in touch with the family. NEFF went on to purchase the property; the family house continues to serve as the organization's headquarters, and the adjacent 118 acres of forestland now make up NEFF's popular Prouty Woods Community Forest.

Thanks to Dick's growing familiarity with NEFF and his professional experience, he was invited to join the Board of Directors in 2003, and served as a valued and active member until 2020—right around the time NEFF's Pooled Timber Income Fund was getting underway.

“It Would Be in Good Hands in The Future”

As part of their estate planning, Dick and Cynthia had already determined that no other family members were interested in owning the Royalston forestland, and had decided to donate it to a nonprofit at some point. The advent of the Pooled Timber Income Fund was “the spark,” Dick said, that spurred them to select an organization and make the gift.

“It seemed like such a great concept, and I was eager to support the program and get it going,” Dick said. “One of the big problems for many landowners is that their investment in timberland leads to very sporadic income, and the Pooled Timber Income Fund was a way to get regular income from your land without having to sell it.”

NEFF also seemed like the right organization to take ownership of a

property that had been sustainably managed as a working forest.

“Learning about forestry through Dick has been a real blessing, and it's something that speaks to me,” said Cynthia. “The Royalston property shows how quality forestry can result in beautiful and vibrant forests, and by giving it to NEFF, we knew it would be in good hands in the future and continue to be managed well.”

Cynthia ultimately views their donation of what is now Perkins Woodlands as an investment in the world she wants future generations to enjoy.

“I have five grandchildren under seven, and last year, we all went for a ride on the bike path in Arlington,” Cynthia said. “My grandson Jack told us to pull over at one point, and then announced, ‘This is my favorite tree, I have to climb it every time.’”

“My other grandson Leo, whenever he's here at our house, he climbs a tree,” Cynthia said. “This physical interaction with trees, and seeing children watch trees grow, seeing children learn about the living world around them—that's why NEFF's work is so important. NEFF is conserving this land for our children and grandchildren.” 🌿

PLANNED GIVING OPPORTUNITIES

The Pooled Timber Income Fund is just one way you can make a legacy gift to New England Forestry Foundation. Making a bequest in your will is a flexible planned giving option that can be revised at any time, and can be made as a specific amount or a percentage of your estate. You can also name New England Forestry Foundation as a charitable beneficiary of your assets—such as retirement plans, life insurance policies, donor-advised funds, or bank accounts.

For more information, please contact Penny Flynn at pflynn@newenglandforestry.org or 978-952-6856 x101.

FINANCIAL PROFILE

We are pleased to report that New England Forestry Foundation had an exceptional fiscal year ending on April 30, 2021, with \$8.5 million in total revenue, an increase of 65 percent over the previous fiscal year, and total net assets of \$46.8 million, an increase of 19 percent over the previous fiscal year. The increase in revenue is primarily attributable to receipt of two \$1 million multi-year pledges this year.

NEFF's net assets include \$32.5 million of land, buildings and equipment, which represents an increase of 13 percent from prior year, due to the addition of 8,000 acres of conservation land primarily in Downeast Maine. Expenses increased 11 percent from the prior year. This increase is due to adding contractors to assist program staff in advancing NEFF's mission, including enhancing our land protection efforts and stewardship of the foundation's lands and increasing our efforts to prevent and address damaging climate change. Our combined balance sheet remains strong and liquid, and our programmatic efficiency remains solid at 80.07 percent. 🌿

FY20 & FY21 Consolidated Results

Sources of Revenue	AUDITED	PRELIMINARY
	FYE April 30, 2020	FYE April 30, 2021
Contributions	\$2,736,874	\$2,393,121
Grants	1,039,631	2,340,175
Timber Sales	333,480	633,840
Land Contributions (Net)	607,968	2,863,657
Investment Income	215,330	166,841
Other Income	20,280	57,831
Sale of Conservation Easement	248,000	135,000
Total Revenue	\$5,201,563	\$8,590,465

Expenses

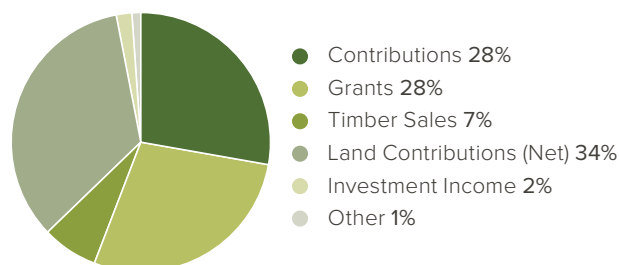
Conservation and Education	\$2,496,204	\$2,757,496
Fundraising	302,841	380,125
Management and General	290,711	306,035
Total Expenses	\$3,089,756	\$3,443,656

Gains (Losses)

Net Realized and Unrealized Gain(loss) on Investments	(343,979)	2,490,748
Gain on Insurance Claim	–	184
Net Realized and Unrealized Gain(loss) on Land Sale	99,035	(185,000)
Loss on Disposal of Fixed Assets	(709)	240
Total Gains (Losses)	(245,653)	2,306,172

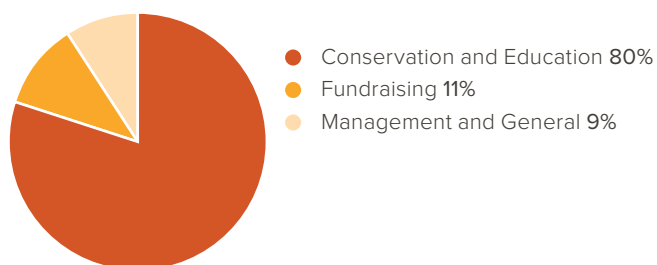
Revenue FY21

May 1, 2020–April 30, 2021



Expenses FY21

May 1, 2020–April 30, 2021



BEGINNING NET ASSETS (May 1, 2020)	\$37,565,111	\$39,431,265
CHANGE IN NET ASSETS	\$1,866,154	\$7,452,981
TOTAL NET ASSETS (April 30, 2021)	\$39,431,265	\$46,884,246*

*Total Net Assets includes Fixed Assets of \$32,514,171








At the time of printing, FY 2021 numbers were preliminary pending audit completion. Audited numbers are available upon request.

CONSERVATION REPORT

Frenchman Bay Community Forest, photo by Michael Perlman, courtesy of Frenchman Bay Conservancy.

Completed Projects

MAY 1, 2020–APRIL 30, 2021

Project Name	Location	Type	Acres	Date
Perkins Woodlands	Royalston, MA	 Community Forest	88	May 19, 2020
Myrin Institute	Great Barrington, MA	 Conservation Restriction	216	June 30, 2020
West Addition	Townsend, MA	 Conservation Restriction	7	September 17, 2020
Whalen & Healdville Farm	Mount Holly, VT	 Conservation Easement	62 & 42	October 5, 2020
Frenchman Bay Community Forest	Hancock, ME	 Community Forest	3,100	October 7, 2020
Holmes Stream Community Forest	Whiting, ME	 Community Forest	2,690	October 7, 2020
Venture Brook Community Forest	Edmunds, ME	 Community Forest	2,200	December 10, 2020
Knobloch II	Charlemont, MA	 Conservation Restriction	41	December 18, 2020
David M. Smith Forest	Leverett, MA	 Community Forest	117	December 31, 2020

Project Highlights

PERKINS WOODLANDS

Cynthia and Dick Perkins donated this forestland to NEFF as part of the Pooled Timber Income Fund (see pages 3 and 10). Perkins Woodlands is bisected by Stockwell Brook, and is nestled between Guiney Memorial Forest, Otter River State Forest, and the Birch Hill Dam. Cynthia and Dick also donated a conservation restriction on the property to Mount Grace Land Conservation Trust, which owns the neighboring Guiney Memorial Forest.

MYRIN INSTITUTE

Myrin Institute protected 216 acres of forest and vast wetlands through a conservation restriction to NEFF. The property, known as Myrin Preserve, forms part of a wooded and wetland wildlife corridor along the meandering Muddy Brook in the scenic Monument Valley, and is enjoyed by local birders and wildlife trackers. The restriction protects rare species habitat and enhances protection of nearby Beartown and East Mountain State Forests. The

Nion Robert Thieriot Foundation and other private donors contributed to NEFF's purchase of the restriction.

WEST ADDITION

Mary West protected her family's Christmas tree farm on the edge of Townsend State Forest by donating seven acres as an addition to NEFF's existing West conservation restriction; Mary and her late husband Ed donated the existing restriction on 30 acres of forest in 2006 to NEFF and Townsend Conservation Land Trust as co-holders.

WHALEN AND HEALDVILLE FARM

The Whalen family donated two conservation easements to NEFF with a combined 104 acres of woodlands and meadow; the family has owned much of the land for more than 100 years. Family members from across several generations and around the country collaborated to protect these family forest tracts. The property is located just west of Okemo State Forest, and the easements will protect part of cold-water Branch Brook and surrounding tributary streams that are important for aquatic habitat. They also enhance a 100-mile-long protected wildlife corridor—recently completed by Mount Holly Conservation Trust, the State of Vermont, and other groups—by creating a connection from the broader corridor into a large forest block that includes the family’s property with important bear wetland and deer wintering habitats.

FRENCHMAN BAY COMMUNITY FOREST

NEFF protected this parcel through fee ownership and combined its 3,100 acres, located near Egypt Bay in Hancock County, with the adjacent Frenchman Bay Community Forest, protected by the Frenchman Bay Conservancy. These combined properties bring the total protected Community Forest acreage to 4,530. NEFF’s Frenchman Bay tract offers important and interesting habitat features—like waterways and wetlands that support inland wading birds—and the overall Community Forest intersects with the 87-mile Down East Sunrise Trail. NEFF is managing the property for songbird habitat, specifically to create and support stop-over and nesting habitat for migratory songbirds within the framework of Exemplary Forestry standards.

HOLMES STREAM COMMUNITY FOREST

Located along Holmes Bay in Downeast Maine, the 2,690-acre Holmes Stream Community Forest includes intact

blocks of contiguous forestland as well as important wetland features like tidal estuarine habitat, found where Holmes Stream flows into the bay. The Holmes property abuts the State of Maine’s popular Cutler Coast Public Lands, a 12,234-acre expanse known for steep cliffs that plunge into the ocean. NEFF is also managing the Holmes Stream property for songbird habitat.

VENTURE BROOK COMMUNITY FOREST

NEFF acquired this property as part of the Maine Coastal Forest Partnership effort to protect a suite of working forests across Downeast Maine, and it demonstrates in miniature the features that make the region’s interlaced network of forests and waterways ideal for cold-water fish. Streams and wetlands weave through the almost entirely forested Venture Brook Community Forest, and the forestland purifies and filters this water as it makes its way into the nearby Dennys River; trees in the riparian zone then shade the Dennys, and the end result is the kind of cool, clean river that young Atlantic Salmon need.

KNOBLOCH II

Kevin and Nicole Knobloch granted a second 41-acre conservation restriction to NEFF that adds to the 608 acres protected through their 2001 NEFF restriction; combined, these restrictions protect just over a square mile of land. The restriction includes the summit of Legate Hill and protects forestland near the headwaters of Rice Brook. This vast and rugged forest is situated on a high ridgeline, and is part of a larger area of protected land that serves as a wildlife corridor; taken together, these lands are one of the best examples of large, intact forests in Massachusetts. The Knobloch addition was part of the Warner Hill Neighborhood Conservation Project, which was coordinated by Franklin Land

Trust with NEFF, the Massachusetts Department of Fish and Game, and the towns’ conservation commission as partners, and funded in part through the state’s Landscape Partnership Grant program. This collaborative effort protected nearly 700 acres in the towns of Charlemont and Rowe.

DAVID M. SMITH FOREST

This property is part of the history of forestry in New England, as it was owned by David M. Smith, author of the touchstone forestry text, *The Practice of Silviculture*, and a long-time professor at Yale School of the Environment. Smith’s land in Leverett likely helped shape the practice of forest management as we know it today. Dr. Smith’s daughters, Nancy and Ellen Smith, donated it to NEFF as part of the Pooled Timber Income Fund. The Smith woodland—made up of mostly white pine and oak, hemlock, and mixed hardwoods—lies next to the Mosher Conservation Area, which is owned by the Rattlesnake Gutter Trust. The Rattlesnake Gutter Trust also holds a restriction on the Smith property and provides public access to the woodlands via recreational trails. 🌿



Venture Brook Community Forest, photo by Lauren Owens Lambert.

NEFF INITIATIVES

EXEMPLARY FORESTRY CENTER

WRITING BY NEFF Climate-Forest Specialist Jen Shakun

This year marked the launch of the Exemplary Forestry Center (the “Center”) at NEFF—the vehicle we will use to take our ambitious, forest-based strategies to address climate change to scale.

As a complement to NEFF’s long-standing forest stewardship and conservation work, the Center brings together and coordinates program work under science, outreach and coalition building, policy, communications, and innovative conservation finance. These constitute the five themes of the Center, which work in concert to achieve four outcomes: no net loss of forests; spread Exemplary Forest management; store carbon in long-lived wood products, especially tall wood buildings; and reduce the use of energy-intensive materials, especially concrete and steel.

These are outcomes NEFF has been working toward for years, but the Exemplary Forestry Center is now providing the structure, strategy and resources NEFF needs to achieve them in time to make a real difference to the climate crisis. The staff members working on programs within the Center—which encompasses all of the initiatives featured in the next three pages—are excited to be underway.

In summer 2020, Center staff convened remotely to plan how to significantly expand the impact of NEFF’s climate-related work. Staff members discussed the capacity and resources needed for success with each program, as well as the connections between them and the potential for powerful partnerships with other groups. This helped chart a strategic path forward that is positioning the Center to make major progress over the next five years.

The staff grouped all programs currently underway within the Center according to the five themes described above, and staff members working within each theme have now formed teams

to advance each of these priority areas. The teams ensure each theme’s work helps achieve the Center’s overarching outcomes, coordinate and align the projects within each theme, and collaboratively determine the theme’s goals and strategies.

The Center’s founding document states what we stand to gain if all of NEFF’s climate-related programs succeed: “The practice of Exemplary Forestry, combined with appropriate use of the forest products and halting forest conversion, can accomplish a transformational increase in the role of New England forests in abating the climate crisis.”

This year, the Center’s science team completed an analysis to quantify the climate mitigation benefits that could be achieved by implementing this approach (described in the summer 2021 issue of *Into the Woods*). It revealed there is potential to keep nearly 650 million metric tons of CO₂ out of the atmosphere over the next three decades through the work of the Center. Let’s get to it!

No Net Loss
of Forest

81
MMT CO₂e

+

Spread Exemplary
Forestry

542
MMT CO₂e

+

Use Long-lived
Wood Products

23.6
MMT CO₂e

=

Major Climate
Mitigation Benefit

646
MMT CO₂e

See what the Exemplary Forestry Center’s individual initiatives have accomplished in the past fiscal year.



NEFF Ecologist Carla Fenner, left, Mahoosuc Land Trust’s Kirk Siegel, and NEFFCo Forester Sherm Small, right, inspect habitat improvements in a 2021 commercial harvest guided by Exemplary Forestry in Bethel, Maine. Photo by C Parrish

POOLED TIMBER INCOME FUND

In the last year, the Pooled Timber Income Fund (PTIF) welcomed two new properties into the Fund, which already included timber from 11 properties leased by NEFF and two properties leased by The Nature Conservancy. As PTIF participants donate their woodlands to NEFF and the woodlands’ timber to a pooled income fund trust—and in return, receive a stream of lifetime income and an initial charitable tax deduction—this means NEFF has also added two new woodlands to its network of Community Forests (see page 7).

In addition, NEFF completed its first timber harvest on PTIF lands and the PTIF accepted two cash donations this year. These funds will go to purchasing new Community Forest land for NEFF and the timber on that land for the PTIF, thereby increasing the pace of conservation. The PTIF is established and growing!

WESTERN MAINE HABITAT RESTORATION

Since 2019, the Western Maine team has recruited and is working with 20 family woodland-owners to implement NEFF’s Exemplary Forestry standards on 12,000 acres from Bethel to Jackman.

The project emphasizes improving and restoring forestland in habitats that are globally important to wildlife. NEFF provides landowner outreach, relationship management, communications, project management, technical expertise, and a model of how Exemplary Forestry works on the ground, and the USDA Natural Resources Conservation Service provides long-term monitoring and reimbursement to qualified landowners to offset the cost of habitat-friendly forest practices. The team has evaluated 73 woodland owners for the program and is working with the 20 current participants based on an evaluation of their woodlands and willingness to embrace the required 30-year Exemplary Forestry Stewardship pledge; more than 3,000 additional acres qualify, if more funding becomes available.

EXEMPLARY FORESTRY INVESTMENT FUND

NEFF’s partnership to launch the Exemplary Forestry Investment Fund (EFIF) is bearing fruit. The EFIF is an environmentally forward fund that aims to increase timber stocking, mitigate climate change, and improve wildlife habitat while producing financial returns for investors. In 2019-2020, NEFF and the Maine Mountains Collaborative (MMC) added Quantified Ventures to the project to help the EFIF team figure out how to monetize a multitude of benefits for land conservation. With their help in identifying potential revenue streams, NEFF and MMC moved to evaluating the first properties for purchase. If all goes well, NEFF and MMC hope to launch the fund and commit to the first purchases this calendar year.



Wildlife Biologist Joseph Roy from the Maine Department of Inland Fish and Wildlife, left, joined NEFF’s Christine Parrish (behind the camera) and forester Robert Haynes, right, in March 2021 to assess habitat values on a spruce-fir woodland near the Upper Enchanted Township in northwest Maine. Photo by C Parrish

EXEMPLARY FORESTRY

As the name suggests, NEFF's Exemplary Forestry standards are woven into all of the Exemplary Forestry Center's projects and initiatives, which means getting the science behind the standards right is imperative. This past year, NEFF has conducted extensive reviews of scientific literature, worked closely with regional experts in silviculture and biology, and has continued to identify and analyze new emerging data to develop NEFF's upcoming Central and Transition Hardwoods Exemplary Forestry standards. The three primary objectives of Exemplary Forestry are improved forest productivity, enhanced wildlife habitat for the range of native species, and a maximal contribution to mitigating climate change through working woodlands; this Exemplary Forestry initiative update focuses on the habitat objective as an example of the work NEFF's science team is conducting.

NEFF built its existing Acadian Exemplary Forestry standards around two umbrella species whose habitat

needs encompass the needs of roughly 75 percent of all other native wildlife species: the American Marten and the Canada Lynx. For NEFF's Central and Transition Hardwoods Exemplary Forestry standards, staff members have researched the types of species and habitats that play a similar "umbrella" role in the forests of southern New England.

They assessed the habitat needs, home range size, and life history traits—feeding, mating, migration, nesting/denning—of a wide range of native wildlife, and selected a suite that includes mammals (bats too!), birds, and invertebrates (bees too!). NEFF considered not only species that are rare, declining, or of special conservation need, but also the more well-known, charismatic, or important in regional recreational and hunting communities. In the end, the umbrella species that NEFF has carried forward in the Exemplary Forestry standards include a suite of species for each major successional stage—like mature, interior forest and early successional forest—that need relatively large blocks of habitat.

BUILD IT WITH WOOD

NEFF's Build It With Wood initiative has grown rapidly over the years, and now includes a number of high-priority projects. This update highlights three of them: a Life Cycle Assessment, a popular webinar series, and the Forest Carbon for Commercial Landowners study.

A first-of-its-kind Life Cycle Assessment (LCA) is nearing completion with NEFF at the lead. This study examines not only the greenhouse gas consequences of building with different materials—concrete, steel, wood products like cross-laminated timber—but also analyzes the carbon dynamics occurring in the forest to produce those wood products for construction. NEFF has identified and modeled the specific forestry practices that result in increased carbon storage in the woods while also producing strong and long-lasting mass timber products for regional markets.

NEFF partnered with Northern Woodlands magazine and Massachusetts Woodlands Institute, a subsidiary of Franklin Land Trust, to host the *Local Wood: Grow, Build, Live* webinar series in early 2021. The four-part series explored the use of local, sustainable wood products at different scales, starting with the set of conference tables produced for NEFF by Mitch Ryerson's wood design class at Massachusetts College of Art and Design, moving to a timber-frame home, and ending with the mass timber John W. Olver Design Building at the University of Massachusetts, Amherst. A fourth webinar titled "Woods to People" focused on the experiences of those who make a living in the forest, featuring artist Kathleen Kolb, poet Verandah Porche, and timber harvesters Fred Heyes and Ken Conkey. Kolb and Porche discussed their collaboratively created catalogue, *Shedding Light on the Working Forest*, and Heyes and Conkey shared their



The new NEFF conference tables produced by Mitch Ryerson's wood design class at Massachusetts College of Art and Design



In a privately owned Western Maine woodland, a large yellow birch and white ash grow in a complex, older forest stand that provides crucial wildlife habitat. Photo by C Parrish

perspectives on the challenges and rewards of timber harvesting in southern New England. The series had a cumulative total of 409 live viewers.

Beginning in August 2020, NEFF has been part of a small group of forest landowners, scientists, philanthropists, conservationists, foresters and others that have met to consider and discuss ways to help large commercial forest owners in Maine capture more carbon in the forest and in forest products. The effort is called Forest Carbon for Commercial Landowners (FCCL), and has led to the formation and funding of a project team of scientists and policy experts that are spending the remainder of 2021 analyzing a series of important research questions that can set the stage for greater climate benefits with continued economic outputs from large forest ownerships. NEFF is on the steering committee, has assisted with the fundraising, and is acting as the fiscal agent for this exciting project. We believe the results of this work will support our contention that with the right forest practices and incentives, fully 30 percent of New England's emissions can be offset by our forests.

FOREST-TO-CITIES CLIMATE CHALLENGE

The Forest-to-Cities Climate Challenge (FTC) reached a key milestone for participant engagement and began a new phase of action over the last year. Participants in the FTC sign a brief written pledge that serves as a personal or organizational statement of support for sustainable mass timber construction. In October, the program welcomed its 100th participant and has since continued to expand, with over 120 individuals and organizations now in the FTC community. In April, program staff hosted a webinar kickoff event to educate participants about the challenges and opportunities for building with wood in New England's cities, and its potential as a climate solution. The kickoff event included presentations from participants who are leaders in the fields of forestry, architecture, and construction. At the conclusion of the event, participants in the webinar self-organized to begin to develop "action groups" to address specific challenges. NEFF will facilitate and support these action groups as they move toward solutions.

FOREST CONSERVATION OUTREACH ALONG THE MOHAWK TRAIL

Through a bid awarded to NEFF from the Commonwealth of Massachusetts, 2021 marked the beginning of a new region of outreach focus for NEFF: the Mohawk Trail Woodlands Partnership, named for the Route 2 east-west scenic highway and the historic American Indian trading path that connected Atlantic tribes to the Iroquois nations further west and passed through the same region. The people of this 21-town region, spanning parts of western Franklin and northern Berkshire Counties in the most-forested corner of the Commonwealth, have come together to chart a vision for their region's future.

Support for the Partnership has come from municipal, non-profit, state, federal, academic and regional planning partners. The focus of the work is on economic development that can sustain the area's forests and natural resources while enhancing the rural way of life for its residents. An unusual convergence of different forest types all occur within the region, providing a tapestry of diverse ecological niches and a prime place to study response to climate change.

Over the next four years, NEFF will serve as Administrative Agent for the Partnership's Board and committees, facilitating public meetings; updating the Partnership's 2015 plan; supporting grant writing and developing priority projects focused on the goals of conserving and sustainably managing forests; promoting climate resilience; and supporting tourism, recreation, carbon credits and renewable wood products. 🌿

PINGREE EASEMENT'S 20TH ANNIVERSARY

CELEBRATING
AN UNRIVALED
CONSERVATION
TRIUMPH, THE
PINGREE FOREST
PARTNERSHIP

In March 2001, New England Forestry Foundation and the Pingree family closed the largest forestland conservation easement in history. This success made NEFF one of the three largest land trusts in the nation by acres conserved—a status the organization retains to this day. Learn about the herculean effort behind this transaction.

Pingree Forest Partnership Campaign Leadership Committee Members, January 2000

CO-CHAIRS: Francis W. Hatch*, Bayard Henry, Wilhelm M. Merck

HONORARY CHAIRMAN: Angus King

COMMITTEE MEMBERS: John S. Ames III, Gerard A. Bertrand, E. F. Bowditch, Jr., Eugene H. Clapp III, Charles W. H. Dodge, John H. Finley III, Robert L.V. French*, Robert H. Gardiner, Gordon Hall, William Haney III, Sherry F. Huber, John M. Kauffmann, Edward J. and Patricia Kfoury, William A. King*, G. Montgomery Lovejoy III, Gordon Mackay Morrison, Jr., Clint Reynolds*, Igor and Karen Sikorsky, John E. Taft*, David I.J. Wang

*Deceased

Some said it couldn't be done.
They were wrong.

In 1999, NEFF announced a groundbreaking venture in land conservation. The Pingree Forest Partnership, conceived of by then Director of Land Protection Keith Ross, would protect 762,192 acres of Maine forestlands. It would pioneer a new scale of conservation and preserve remarkable Maine resources from the eastern edge of the White Mountains to the Allagash Lakes, including 2,000 miles of river frontage. It also presented a stupendous fundraising challenge for NEFF's leadership, and two of New England's leading conservation families stepped up.

In the mid-1800s, David Pingree, Sr. first invested in Maine's timberlands. By the 20th century, Pingree family members were recognized as leaders in sustainable management. The Pingree forest was the first in the world to be "Green Certified" by two independent third-party certifiers. Meanwhile, the Merck-Hatch-Henry family's roots go back to America's first forester, Carl Schenck, who demonstrated the power and beauty of scientific forestry on the Biltmore Estate in North Carolina.

Once the Pingree heirs agreed to the terms of the easement deal, NEFF

wisely recruited the one person they knew could skillfully helm the boat and meet the fundraising challenge head-on: Bayard Henry, a dedicated and long-serving member of NEFF’s Board of Directors (still an Honorary member of that body) who had previously served as both president and treasurer.

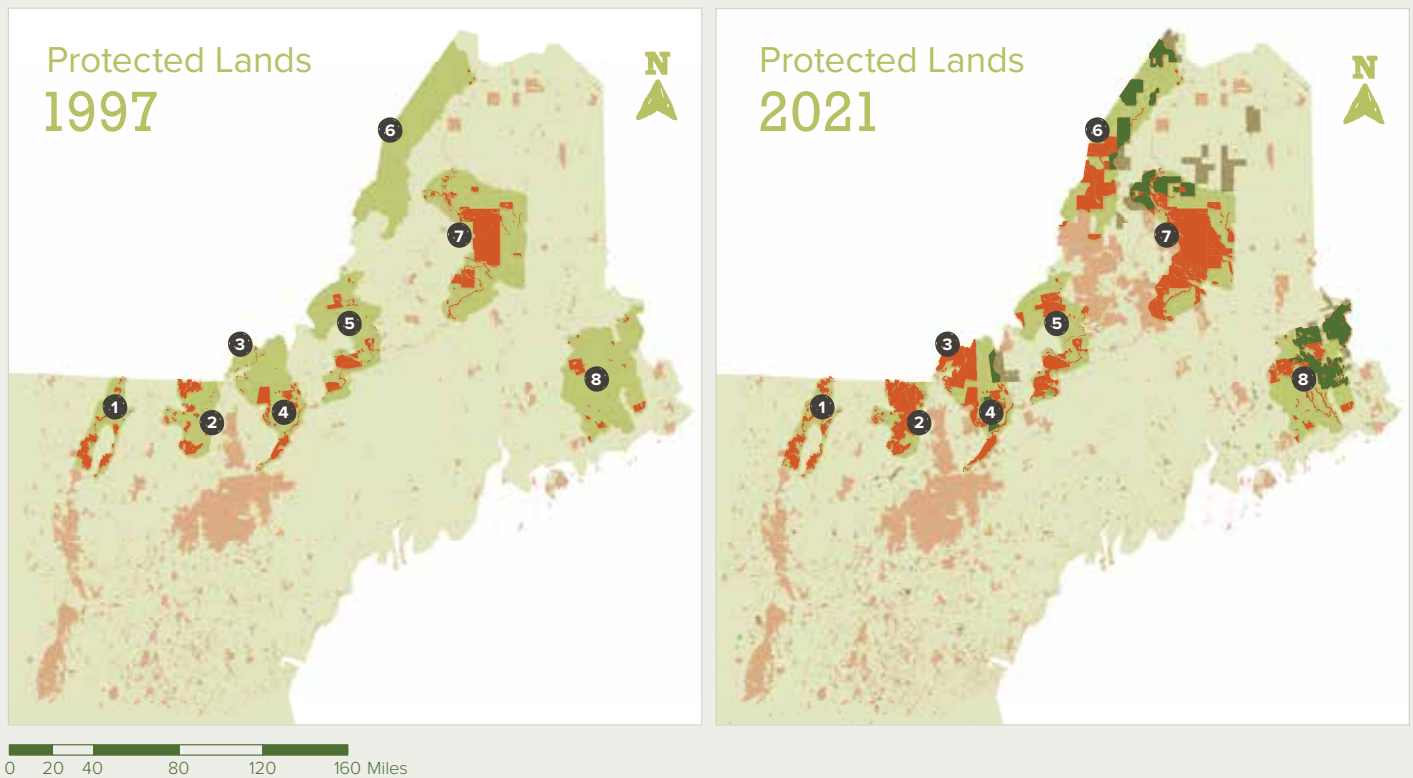
With a daunting deadline of raising \$30 million in 12 months, Campaign Chair Henry maintained a laser focus on major gifts to create momentum and ensure the campaign reached its goal on time. Bayard quickly recruited outstanding volunteer leaders, including

Frank Hatch, Wil Merck and Maine Governor Angus King (see page 13 for full Campaign Leadership Committee).

They worked tirelessly, and enlisted friends, acquaintances, and family in the race to secure the deal. Special mention and thanks go to the Pingree family heirs; to members of the Henry, Merck and Hatch families; and to the Barr Foundation, the Libra Foundation, and the Elmina B. Sewall Foundation. Without their leadership and extraordinary financial support, NEFF could not have completed the project. A challenge grant from The Kresge Foundation launched

the public phase of the campaign and inspired hundreds of \$37.50 gifts from individuals to “protect one acre” that put the campaign across the finish line. Every gift was essential. We remain humbled by the generosity of the supporters, partners and others who joined this pioneering endeavor. Thank you all.

On December 31, 2000, the Pingree Forest Partnership surpassed its \$30 million goal, and in 2001, NEFF purchased the conservation easement on more than 762,192 acres, an area larger than the state of Rhode Island. Who said it couldn’t be done? 🌿



- Northern Forest Alliance (NFA) Proposed Wildlands
- NEFF Conservation Easements**
- Within NFA Proposed Wildlands
- Outside NFA Proposed Wildlands
- Protected Lands (GAP Status 3 or Better)**
- Within NFA Proposed Wildlands
- Outside NFA Proposed Wildlands

- 1** Northern Green Mountains
- 2** Nulhegan River & Victory Basin Watershed
- 3** Connecticut River Headwaters
- 4** Upper Androscoggin Valley
- 5** Western Mountains
- 6** Upper St. John River Valley
- 7** Greater Baxter State Park
- 8** Down East Lakes

In 1997, the Northern Forest Alliance (NFA) identified 10 large and high-priority landscapes for conservation—called “Wildlands”—and mapped their already conserved and still-in-need-of-conservation acreage. NEFF has updated the NFA maps to show how much land has been protected in these areas over 24 years. NEFF’s multi-location Pingree easement has contributed to three of the landscapes (3, 6, 7), and its Downeast Lakes Forestry Partnership easements to one landscape (8).

Maps created by Jennifer Shakun. Thanks to David Publicover of the Appalachian Mountain Club for providing the maps’ historic protected lands data and the Wildlands boundaries. Current protected areas data obtained from the Maine Office of GIS, NH GRANIT, and VT Center for Geographic Information.

OUR DONORS

MAY 1, 2020–
APRIL 30, 2021

Generous support from the individuals and organizations listed here has allowed us to continue and expand our efforts to conserve the forest landscape and the environmental, social, and economic benefits it supports. While we have listed gifts of \$100 or more, we want you to know that every gift is important to us and helps us fulfill our mission.

In this year's list of donors, we are reporting the full value of multi-year gifts to our Exemplary Forestry Center and Downeast Woods and Wildlife project so as to fully reflect donors' impact on NEFF's work. These gifts include pledges and outright donations that span last fiscal year and this fiscal year.

Harris Reynolds Society

\$1,000,000 OR MORE

Anonymous
Lookout Foundation

\$500,000–\$999,999

Julie[†] and Bayard Henry
Mr. Timothy A. Ingraham

\$100,000–\$499,999

Anonymous
Chris Nye
Porpoise Fund*
The Reynolds Family
Summer Hill Foundation
U.S. Small Business Administration

\$50,000–\$99,999

Anonymous
Mr. Robert W. Ackerman
Mr. Philip Y. DeNormandie
Geoffrey C. Hughes Foundation
Maine Timberlands Charitable Trust
Wilhelm Merck and Nonie Brady
Natural Resource Conservation Service
The Nature Conservancy in Maine
The Nion Robert Thieriot Foundation

\$25,000–\$49,999

Anonymous (2)
Mr. and Mrs. Alexander K. Buck, Jr.
Mr. Benjamin Emory
Frederick and Margaret L.
Weyerhaeuser Foundation
George H. and Jane A. Mifflin
Memorial Fund
Gordon and Marjorie Osborne
Foundation
Maine Community Foundation
Massachusetts Audubon Society
Massachusetts Executive Office of
Energy & Environmental Affairs
Tracy Moskovitz and Bambi Jones
National Fish and Wildlife Foundation
The Whitehead Foundation
USDA Forest Service, Northeastern
Area, State and Private Forestry
Weyerhaeuser Family Foundation

\$10,000–\$24,999

Anonymous
Mr. Laurence Band
Mr. Whitney A. Beals and Pam Esty
Cricket Foundation
Davis Conservation Foundation
Duke Family Fund of the Greater
Lowell Community Foundation
George and Marina Hatch
Whitney and Elizabeth Hatch
Horizon Foundation, Inc.
Maine Coast Heritage Trust
Onion Foundation
Overhills Foundation
The John Merck Fund
Mr. John M. Whalen

\$5,000–\$9,999

Anonymous
Joan Blaine
Cameron and Anne Brandt
Judy Buechner Advised Fund*
Olivia and John Farr Fund at
Schwab Charitable
Mr. Jonathan Keyes
Mr. Kevin Knobloch and Ms. Nicole
Knobloch
Michael and Monica Lehner
New England Forestry Foundation
Fund at The Boston Foundation
Mr. James R. Nichols
Mary Ann and Bob Norris
Cynthia and Dick Perkins
The Morgan Palmer Foundation
The Stifler Family Foundation

\$2,000–\$4,999

Beard Family Charitable Trust
Joyce Bernstein and Larry Rosenthal
Mr. John M. Bradley
Cherbec Advancement Foundation
Tim and Patty Crane
Christopher Di Bonaventura
Frederick and Madeleine Findlay
Shirley S. French
Carolyn Hotchkiss Charitable Fund
at Schwab Charitable

Mr. Sydney Lea and Ms. Robin Barone
Anne and Robert Perschel
David Roby
Clayton Rockefeller and
Manya Rubinstein
Shelly and Todd Rodman
Sabbathday Lake Shaker Village
Conservation Easement Fund of the
Maine Community Foundation
Ms. Anne Stetson
Mr. and Mrs. Thomas Stone
The Betterment Fund

\$1,000–\$1,999

Mr. and Mrs. Richard Brockelman
Mr. and Mrs. Frank Deland
Mr. William B. Hull
Mrs. Helen O. Keeler
Ms. Pierrette Kelly
Kemp Road Fund*
David and Cristina Lewis
Monty and Jo-Ann Lovejoy
Merloyd Ludington Lawrence
Ray and Gail Lyons
Gerard and Catherine Milne
Amey Moot
Network for Good
NH Conservation Real Estate
Mr. Edward N. Perry and
Ms. Cynthia W. Wood
Russell Farm and Forest Conservation
Foundation
Mr. Scott Sacco
Ms. Natalie Starr
Mrs. Tanya S. Tellman
Vermont Community Foundation
Veterinary Health Care of Groton, LLC
Wagner Forest Management, Ltd.
Hartley D. Webster Charitable Fund*
Mary C. West
Mr.† and Mrs. Frederick T. Weyerhaeuser
Mr. Rick Weyerhaeuser and
Dr. Annie Brewster
William Howard Flowers,
Jr. Foundation, Inc.

\$500–\$999

Anonymous (2)
Dr. Ashley Ackerman
Philip S. Balboni
Maura and Larry Barstow
Benevity Community Impact Fund
Ellen N. Brandt
Connecticut Mulch Distributors, Inc.
The Cruz Family
Mr. Douglas J. DeAngelis
David Dimmick
Andrew Falender
Kate and Hermann Field Legacy Fund*
Mr. Albion R. Fletcher, Jr.
Dr. David Foster and Marianne Jorgensen
Mr. Jameson S. French
GE Foundation
Grandgeorge Family Fund of the New
Hampshire Charitable Foundation
Mr. and Mrs. Charles R. Grigg
Ms. Rita G. Grossman
Gurney's Sawmill, Inc.
Heyes Family Forests LLC
Mr. Edward J. Kfoury
Mr. Karl H. Klasson
Land & Community Heritage Investment
Program
Robert Lawrence
Mr. and Mrs. David S. Lee
Mr. and Mrs. George Lewis
Mr. and Mrs. E. Christopher Livesay
Ms. Camilla C. Lockwood
Mr. Forest Lyford
Ariane Nick
Carol K. Pforzheimer and Carl A.
Pforzheimer Fund*
Mrs. Millard Pryor, Jr.
Mr. John C. Rounds
Dr. Lynda A. Schubert
Mr. and Mrs. David Scudder
Sedgwick Family Fund at the Cleveland
Foundation
Moirá Shanahan and Michael Friendly
Mr. Kurt F. Somerville
Stevenson Family Charitable Trust
The Award Fund at Vanguard Charitable
Mr. and Mrs. W. Nicholas Thorndike
Mr. Richard Thornton
Mrs. Christopher M. Weld

\$250–\$499

Anonymous (5)
Mr. Emory W. Ackley
Robert and Billie Adler
Mr. Derek M. Beard
Mr. Gordon H. Bemis

Timothy & Carolyn Biglow
Bisby Charitable Fund*
Mr. Stephen Bradley
Mr. and Mrs. Richard Briggs
Broad Hill Farm
Mr. Harold Burnett
Charter School Fund
William G. Constable Charitable
Foundation*
Francis Coolidge
Mr. and Mrs. Benjamin Craver
Edith C. Crocker Charitable Trust
Linda Cromwell
Ms. Ruth Cutler
Jo-Ann Dery and Bob Tosi
Mr. Benjamin C. Davis
Mr. Matthew K. Eisenbeck
Susan Fagerstrom
Mr. John O. Flender
Nancy and Blaine Gaustad
James Gillespie
Glorioso Family Trust*
Tony and Sally Grassi
Andrew Greenland
Robert B. Hedges, Jr. Family Fund*
Mr. Douglas P. Hill and Alexandra T. Breed
Joseph W. Huber
Jon and Anne Huntington
Mr. and Mrs. Leonard M. Johnson
Thomas and Elizabeth Kelsey Fund*
The Ted and Connie Lapres Fund at the
Community Foundation of North Central
Massachusetts
Robert and Patricia Leipold
Ellen W. Lovejoy
Mr. Frank Lowenstein
Gail McCarthy
George and Carol Milne
Mr. John H. Morison, III
William and Melanie Nesheim
New England Forestry Consultants, Inc.
Next Phase Studios, Inc./Rick Ames
Mr. John L. Occhialini
The Honorable John W. Olver
Ms. Heather Peterson and
Dr. Charles DeVinne
Pomfret Horse & Trail Association, Inc.
Mr. Robert Price
Brendan T. Redmond
Ms. Patricia Sandilands
Ellen Smith
George Stalker and Jean Keskulla
Mr. Eric Stephens
Erich Stephens
Nancy and Craig Troeger
Two Trees Forestry

Mr. and Mrs. Floyd Van Alstyne
Mrs. Jephtha H. Wade
Nik and Sara Waggener
Claire Walton and Eve Waterfall
Mr. and Mrs. John Warren
Mr. Charles Weed
Mr. Stephen M. Weld, Jr.
Danielle Fillion White
Mr. Steven A. Whitesell
Katherine Winter
Mr. Frank Wojciechowski
Ms. Joan Wolfe
Mr. Henry L. Woolsey

\$100–\$249

Anonymous (6)
7 Lakes Alliance
Lainey and John Alexander
Donald Andersen
Mr. and Mrs. Colin Anderson
Ms. Anne Armstrong
Phoebe Hemenway Armstrong
Mr. and Mrs. Kenneth Atkins
Ms. Doris Baer
Mr. and Mrs. Dudley Baker, III
Mr. Sidney Balch
Bannister Giving Fund*
Mr. and Mrs. David J. Beattie
Samuel Bell Family
Mr. and Mrs. Ronald Benoit
William and Barbara Bentley
Judith Berg
Mr. John D. Bergquist
Mary and David Berman
Ms. Anne Booth
Mr. Leo Bourque
Mrs. Anne Bower
Mr. Duffy Brent
Mr. Kevin Breunig and Ms. Linda Rosen
Mr. Christopher N. Brown
Mr. and Mrs. William C. Brown, Jr.
Winthrop N. Brown
Carol Browne
Mr. and Mrs. Pierce Browne
Mr. Robert R. Bryan
Thomas Bryson
Dr. Bruce W. Bunker
Mr. Thomas Burke
Mr. Robert W. Busby and
Dr. Maureen Conte
Barbara and William Buss
Mr. Mic Butterworth
Kathleen Carr
Sam and Margaret Carr
Charlie and Deb Cary
Mr. D. Thompson Challinor
Ms. Susan Chambers

Charities Aid Foundation of America
Richard K. Charney
Ms. Jane Chrisfield
Mr. Michael Christopher
Ann Churchill
Mr. Stanley J. Civco
Ms. Ingeborg Hegemann Clark
Janet Clark
Ms. Andrea Colnes
Steve and Alexi Conine
Steve Copeland
Mr. James M. Coull
Mr. John L. Cox / Cox & Company, Inc.
Mr. Robert D. Cox, Jr.
Mr. Peter W. Cudhea
Chris and Molly Cutler
Mr. Barry Dame, Jr.
A. David and Katharine B. Davis
Dr. and Mrs. David H. Davis
Tom DeNormandie
Frances DeToro
Steven E. Dinkelaker and Ruah Donnelly
Sherry L. Dutzy
Mr. Jeffrey Enman
Ms. Candace Erickson
Mr. Linwood M. Erskine, Jr.
Carrie Farmer
Charlotte and Charles Faulkner
Michael Ferrucci
Edward Fisichelli
The Fitts Family
Sharyn Flaherty
Lisa and George Foote
Steven and Andrea Frank
Mr. Martin Fuchs
Gage Family Fund*
Donna Gardikas
Ms. Kristine Geils and Mr. William Knuff
Ms. Megan Geiselhart
Margaret and Tony Gibbs
Gibson Family Fund*
Mr. R. Alec Giffen
Ms. Valerie Gillies
Fred Gordon
Mark Gosnell
Dr. and Mrs. Herbert F. Gramm
Dr. Ramon Greenberg
William and Monique Gregg
Mark and Hannah Gross
Ned Gruener
Tom and Carol Gumbart
Peter and Laura Haas
Mr. Brian Haeckler
Geordie Hall
Mr. and Mrs. Gordon Hamersley
Mr. George C. Harrington
Mrs. Roslyn E. Harrington

Ms. Andrea Harris
Sheridan Harvey
Samuel and Nicole Hawkey
Tim and Deb Hawley
Ms. Nancy Hazard
Mr. John F. Hemenway
Caroline Lee Herter
Hesse Family Charitable Fund*
Wilbert Hill
Mr. William N. Hill
Reed Hillman
Mr. and Mrs. Arthur C. Hodges
Ms. Sherry F. Huber
Michael Hughson
Mr. Ogden Hunnewell
Innovative Natural Resource Solutions LLC
Mr. Peter Jeffries
Ms. Penelope D. Johnson
Ms. Wendy Johnson
Woodward and Florence Johnson
Mr. Anthony A. Jones
Ms. Joyce D. N. Jones
Donald and Patricia Joy
Mr. and Mrs. James W. Karner
Mr. Arthur Kelton, Jr.
Paul Kendall and Sharon Rives
Ms. Mary Eliza Kimball
Susan Kirincich and Chuck Wooster
Debora and Alfred Klein
Ms. Martha Klein
Mr. David Klimczak
Koch Family Fund*
Mr. Peter W. Krusell
Ms. Holly Langer
Sarah and Justin LaSelva
Olin G. Lathrop
Ms. Billiegene A. Lavallee
Ms. Jacqueline Leaf
The Leary Family
Mr. and Mrs. Denis R. LeBlanc
Marcia Legru
Mr. William Leipold
Mr. and Mrs. Seaver Leslie
Mr. and Mrs. James N. Levitt
Mrs. Emily L. Lewis
Brian and Sandi Lincoln
Ms. Leslie Lockard
Ms. Christine Lojko
Mr. and Mrs. Kenneth Lombard
Stephen and Jeanne Loomis
Ms. Noel Mann
Marcus Family Charitable Trust
Ms. Lindsey Brace Martinez
Mr. John W. McClain
Mr. Maxwell L. McCormack, Jr.
Mr. and Mrs. Donald McGinley
Tom McHenry

Mr. and Mrs. John H. Meiklejohn
 The Meril Family Trust
 Mr. Ray F. Merrill
 Mrs. Jean E. Mertinooke
 William Miniscalco and Sarah M. Guilford
 Marlee Mooney
 Dennis Morin
 Mr. Richard V. Muehlke and
 Ms. Martha R. McLure
 Ms. Claire Muhm
 Courtney Mullen
 Ms. Katherine S. Naughton
 Cornelia G. Nichols
 Mr. Lorrel B. Nichols, Jr.
 John Nolan
 Mr. and Mrs. Peter Nolan
 The Nordhaus Family
 Northbridge Insurance Agency, Inc.
 Ms. Jacqueline Perry O'Connor
 PJ and Tina O'Rourke
 P. Christopher Cutler Family Fund*
 Mr. Leonard Palmer
 Mr. John Perkins
 Judith G. Perley
 Mr. Samuel D. Perry
 Timothy and Cindy Petersen
 Mr. Bruce Phillips
 Greg Piasecki
 Ms. May Pierce
 Jeff and Jen Potter
 Justin Potter and Claire Love
 Pratt Family Giving Fund at
 TIAA Charitable
 Mr. Thomas Quarles, Jr.
 Mr. Arun Ramasamy
 Mr. James Richardson
 Mr. and Mrs. Russell Robb
 Mr. Edward J. Robbins
 Neil and Athena Robbins
 Mr. Alan M. Robertson
 Peter and Virginia Russell
 Audrey Salzmänn
 Mr. and Mrs. Albert E. Saunders
 Leyla Schimmel
 Mr. and Mrs. John T. Scholz
 Ms. Gail Skinner-Brassard
 Larry Spencer
 Mr. Lee E. Sproul, Jr.
 Mr. and Mrs. G. Wade Stanier
 Anne Stanley
 Ms. Mary Ann Streeter
 David and Cynthia Strub
 Mr. David L. Stuller
 Ms. Katharine R. Sturgis
 Hooker and Jane Talcott

Ms. Pamela A. Taylor
 Mr. Peter Terwilliger
 The M.E. Marks Fund at InFaith
 Community Foundation
 David and Patricia Thompson
 Nat Thompson
 Mr. and Mrs. Thomas Tremblay
 Mr. Brian J. Trudeau
 Ms. Judith Tyler
 Ms. Letitia Ufford
 Mr. Joseph R. Vasselli
 Paul Veeder
 Richard Verney
 Dr. Sally J. Walker
 Mrs. David L. Wallace
 Mr. and Mrs. Monte J. Wallace
 Donald Weigt
 Bryan Wentzell and Anna Fincke
 Westford Sportsmen's Club, Inc.
 Ms. Mariellen Whelan
 Emerson and Beverly White
 Ms. Joyce W. Williams
 Mr. Craig Winsor
 Susan and Michael Wolfe
 Mr. John M. Woolsey
 Mr. Thomas Worthley
 Mr. Jeffrey D. Yates
 Yellowbee Studio
 Carol Youell and Russell Bidwell
 Mr. Steve Zerra

**GIFTS OF LAND AND
 CONSERVATION EASEMENTS**

Healdville Farm LLC
 Mr. Kevin Knobloch and Ms. Nicole
 Knobloch
 Cynthia and Dick Perkins
 Nancy and Ellen Smith
 Mary C. West
 John L. Whalen II, T. Patrick Whalen Jr.,
 Timothy Nash Whalen, and Christopher
 A.C. Whalen

GIFTS-IN-KIND

In addition to gifts of cash and securities,
 NEFF receives donations of supplies,
 services, and personal property.
 The following is a list of those who
 generously donated such gifts to NEFF
 in FY 2021.
 Virginia and Rick Harnden
 Paul Kendall and Sharon Rives
 Monadnock Paper Mills, Inc.
 Quality Graphics, Inc.

TRIBUTES

Dr. Ashley Ackerman in honor of
 Margaret and Robert Ackerman
 Ryan Malarky in honor of Mike Brennan
 Hope Coolidge in memory of
 Hamilton Coolidge
 Steven W. DiDomenico in honor of
 Sal DiDomenico
 Mark Bussiere in memory of Ralph Doe
 Mr. Duffy Brent in honor of Penny Flynn
 Shirley S. French in memory of
 Robert L.V. French
 Edward Gilligan in memory of
 Muriel Gilligan
 Andrea Harris in memory of Richard
 and Rosemary Harris
 Sheridan Harvey in honor of the
 Harvey and Prouty families
 The Cruz Family in memory of
 Richard Jordan
 Courtney Mullen in honor of
 Pauline Mullen
 Claire Muhm in celebration of
 Anne Perschel
 George Hall in memory of Don Prouty
 Skylar Mejias in honor of your favorite
 pussywillow tree
 Lou and Panny Putnam Nichols in
 memory of Hugh T. Putnam Jr.
 Judy Oplinger in memory of Dave Rock
 Richard Marion in memory of Joan Roy
 Audrey Salzmänn in memory of
 Rabbi Harold Salzmänn
 NH Conservation Real Estate in honor
 of David and Tanya Tellman

In memory of John T. Hemenway

Ms. Anne Armstrong
 Phoebe Hemenway Armstrong

**In honor of Bayard Henry's
 longstanding and extraordinary
 service to NEFF**

George and Marina Hatch
 Serena M. Hatch
 Whitney and Elizabeth Hatch

In memory of Elizabeth (Betsy) Nichols

Anne Booth
 Cornelia G. Nichols

 We have made every effort to accurately list those who have made contributions.
 We apologize for any errors or omissions and hope you will notify us of them.

* Denotes a fund associated with Fidelity Charitable | † Deceased



NEW ENGLAND
FORESTRY
FOUNDATION

32 Foster Street | P.O. Box 1346 | Littleton, MA 01460
T 978.952.6856 | F 978.952.6356 | newenglandforestry.org

NONPROFIT ORG
U S POSTAGE
PAID
THE MAILING CENTER
05641



Photo by Charlie Reinertsen.