

Campaign Statistics

Contributions from individuals, foundations, businesses, government agencies, municipalities **\$8,758,600**

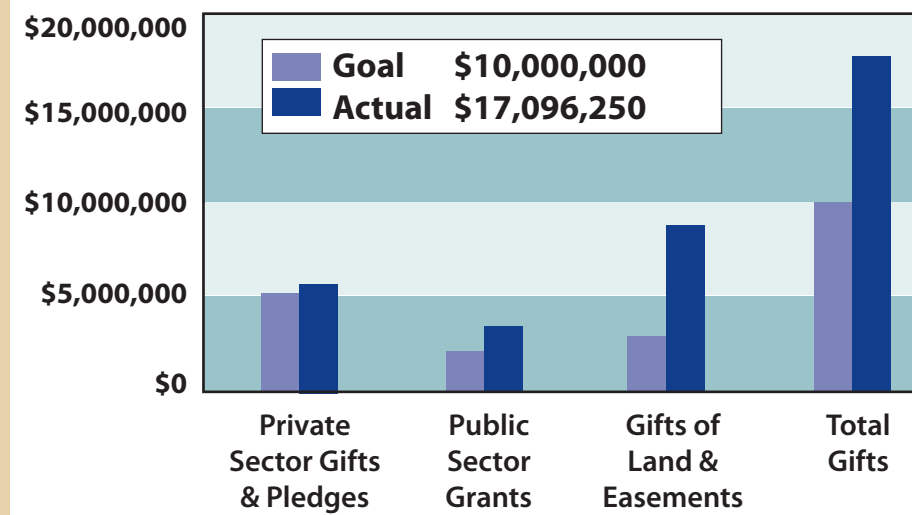
Value of land, easements, and bargain sales donated to date **\$8,337,650**

TOTAL \$17,096,250

Acres of land and easements purchased or donated to date: 1652.25 acres (33 properties)

Acres of additional land, scheduled for purchase or donation in the next three years with MtA2C dollars, approximately 2,000

Campaign Goals vs. Actual



STORIES OF SUCCESS

The Tatnics: Trails And Turtles

The Tatnic region, located just north of Mt. Agamenticus in the towns of Wells, South Berwick and Ogunquit, supports a matrix of pocket swamps, forested wetlands, cattail marshes and a highly productive network of vernal pools. This rich assemblage of habitat types hosts a diversity of plant and animal species including the Blanding's and Spotted turtles, both identified as rare or endangered in Maine. Thanks to Great Works Regional Land Trust volunteers, ten generous and forward thinking landowners stepped forward to work with MtA2C to permanently protect their lands. These properties will create a corridor to Great Works Regional Land Trust's Orris Falls Preserve and will also create a link to land owned by the Maine Department of Inland Fisheries and Wildlife, protecting habitat and providing safe travel routes for many species.

The area is a recreational hot spot for local residents. One of the properties includes the trailhead for the Chicks Brook Trail system that connects into 42 miles of trails leading all the way to the summit of Mt. Agamenticus.

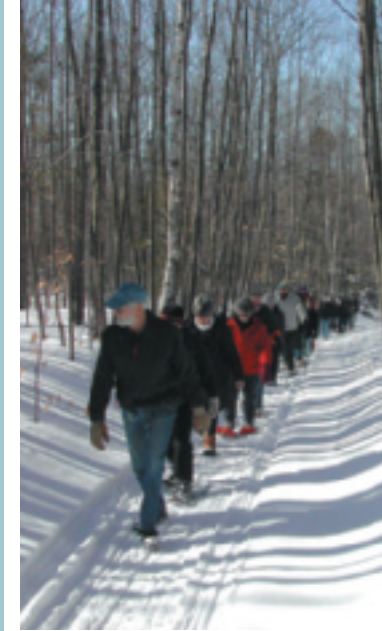
Mt. Agamenticus Region: Community Involvement

Two years in a row, the citizens of York voted overwhelmingly to help support the purchase of land in the Mt. Agamenticus area. In 2004, a \$200,000 warrant article passed to help fund the purchase of the McIntire Highlands Preserve, a 296-acre wooded tract belonging to Mary McIntire Davis, located near Bell Marsh. The second citizen vote resulted in a town contribution of half the purchase price, or \$150,000, to match \$150,000 from the federally funded Coastal Estuarine Land Conservation Program for the purchase of the Josiah Norton Road Property east of Third Hill in York.

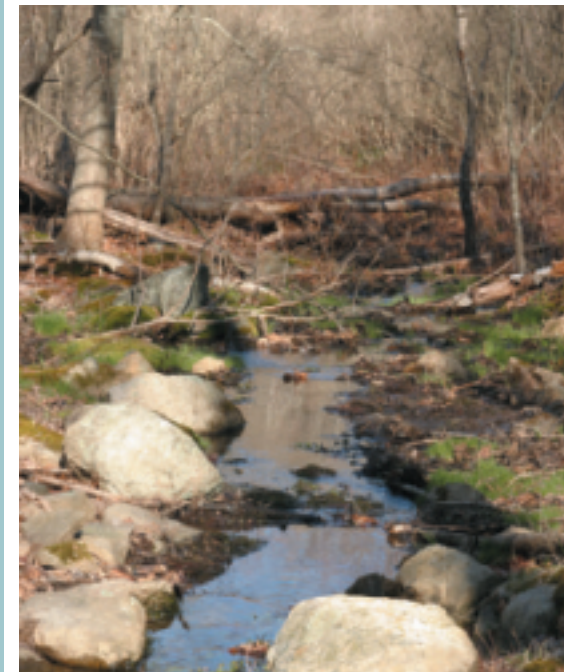
York River Lands Protected: Scenic Views, History And Culture

Robert Moody Shaw and Alice Shaw, widow of Robert's brother, Warren Handsen Shaw, protected their 24-acres of land along Cider Hill Road and the York River with an agricultural conservation easement on land abutting 46 acres on which the Trust already held a conservation easement granted by Mary McIntire Davis in 1999. This property is enhanced by a rich past of Shaw family ownership dating back to the early 18th century.

Farther east on the York River, at Sewall's Bridge Dock, the York Land Trust and MtA2C joined forces in 2003 with local fishermen, Jeff Donnell and Mark Sewall, to purchase and place a conservation easement on a small piece of working waterfront located close to York Harbor. The easement ensures that the dock will be used for commercial fishing in perpetuity. This action was precedent-setting, as this is a first in the nation use of a conservation easement to protect a working fishing dock.



The Tatnic region supports both the Blanding's and Spotted turtles and is a recreational hotspot for local residents who enjoy the 42 miles of trails leading to the summit of Mt. Agamenticus.



The Josiah Norton Road Property supports two rare plant communities, chestnut oaks, and a small hickory oak forest, and it falls within a 3,300-acre block of unfragmented forest, abutting thousands of acres already conserved.



The Shaw property is a combination of hay fields, marshes, streams, a farm pond, and nearly 1,000 feet of frontage on the York River.



Protecting Sewall's Bridge Dock allowed the continuation of commercial fishing, important to York as a community.

Brave Boat Harbor: Family Legacy

At the end of Raynes Neck Road, near the edge of Brave Boat Harbor, brothers Calvin and Thomas Hosmer granted a conservation easement to the York Land Trust on thirty acres of open fields and a mile of oceanfront, preventing future development there and preserving the character of Brave Boat Harbor Farm for continued agricultural use. The Hosmer property is one of the most valuable the Trust has helped to protect, and it represents one of the largest gifts received by the Mt. Agamenticus to the Sea Conservation Initiative. It abuts conserved marshland and forestland in the Rachel Carson National Wildlife Refuge that were conveyed to the United States Fish and Wildlife Service by Calvin's and Thomas' parents, bringing the total of land committed to conservation by the Hosmer family to 150 acres.

In another seaside acquisition, Mary Kimball, who was a lifelong resident of Cutts Island in Kittery, donated nearly all of her family's remaining acres to the United States Fish and Wildlife Service's Rachel Carson National Wildlife Refuge, following a tradition started by her father William F. Raynes. The senior Raynes conveyed 126 acres of his land to the Refuge 10 years ago. There are 400 additional acres in this area remaining to be preserved and paid for with MtA2C funds.

Regional Planning And Municipal Work

The Mt. Agamenticus to the Sea partners could never afford to purchase every acre of land needed for conservation in southernmost Maine, nor would that be desirable. Involving MtA2C's six communities in conservation planning contributes to the long-term protection of the region's natural resources.

With funding from the Maine State Planning Office that was matched by each town, the Southern Maine Regional Planning Commission is partnering with MtA2C and the six towns within the MtA2C project area on several conservation planning projects. The goal is to provide towns with the tools they need to realize the conservation goals set forth in each municipality's Comprehensive Plan. These include:

- creating land use maps that demonstrate how different zoning approaches will affect each municipality;
- completing a "build-out analysis" for each town, showing what each will look like when all developable land has been used;
- developing "open space impact fee" language for each community in addition to identifying a variety of potential revenue sources to fund the protection of natural resources;
- working on mapping projects to identify the region's key species in lands that should be protected.

The Hosmer property consists of 30 acres of open fields and oceanfront and abuts conserved marshland and forestland in the Rachel Carson National Wildlife Refuge.



Conservation work across town boundaries



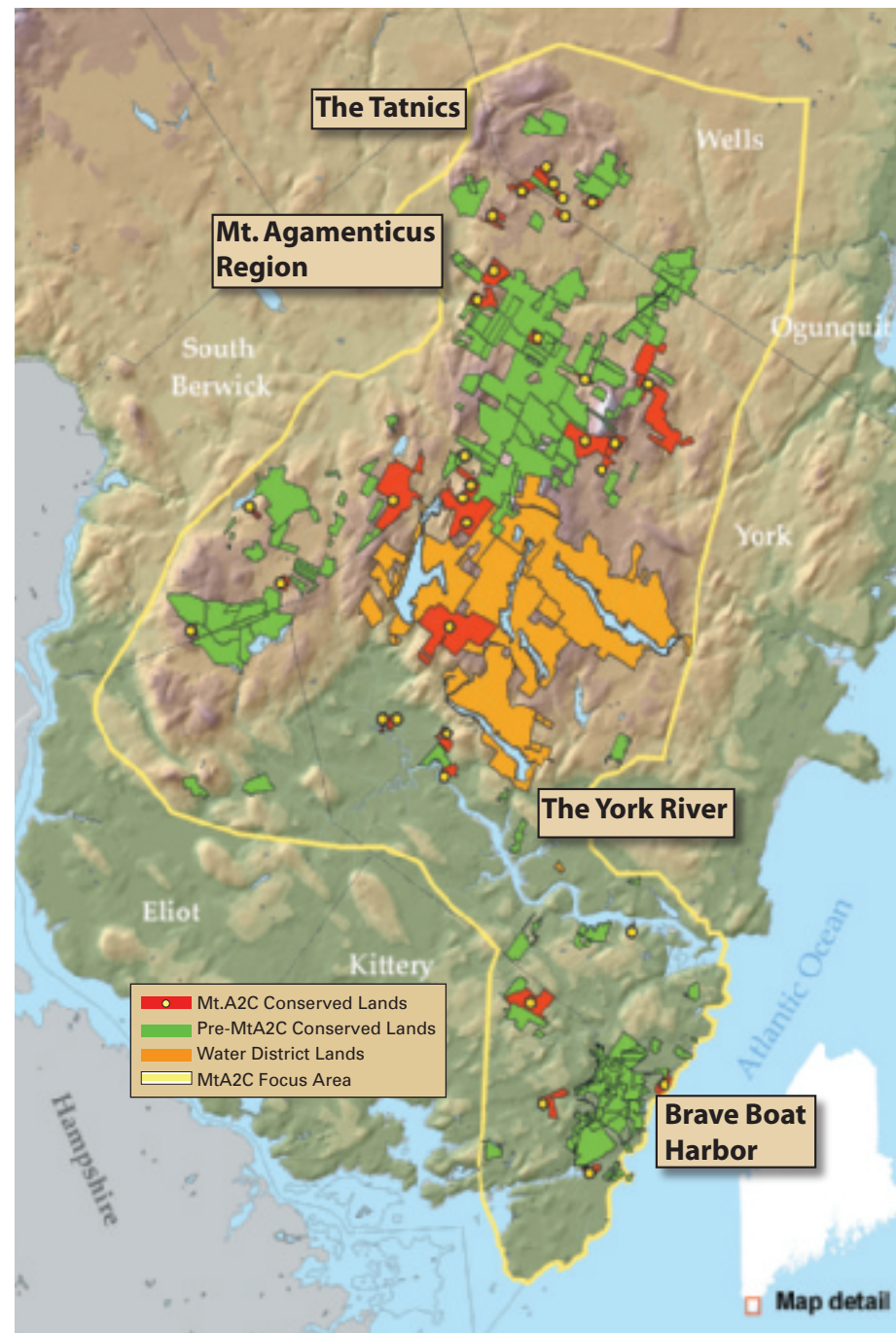
A Brief History

Building on three decades of land conservation work, ten regional conservation organizations joined forces in October of 2002 to launch the Mt. Agamenticus to the Sea Conservation Initiative (MtA2C), with the aim of achieving the following bold conservation goals: adding seven thousand acres to those already protected in the 48,000-acre region of southern Maine extending from the Tatnic Hills of Wells, South Berwick, Ogunquit, Eliot, and York to Gerrish Island in Kittery; increasing local capacity to manage these lands in perpetuity; and developing strategies with six municipalities to protect the rich ecological and cultural values of the region.

The Greatest Biodiversity In All Of Maine Threatened

This area is uniquely endowed with large unfragmented forests, rare and exemplary natural communities, and the greatest diversity of threatened and endangered species in all of Maine. Recognizing this and the fact that exponential population growth and development have put our communities at risk and that the health of our shared environment is threatened, we felt compelled to act, before it was gone forever.

Each piece of conserved land has a story - of families, of community involvement, of cultural heritage. One by one we are creating a green corridor extending from the mountain to the sea for the protection of forest wildlife habitat, healthy drinking water, hundreds of species of birds, fish and shellfish, and abundant recreational opportunities. All of this is being protected for the enjoyment of our citizens, now and forever.



Caring For MtA2C's Protected Lands- Building Capacity At The Local Land Trusts

As part of the MtA2C Campaign, \$523,575 has been raised to date to establish a stewardship endowment at the Maine Community Foundation to care for MtA2C lands protected by MtA2C. The endowment has been growing steadily since 2004 due to the Campaign's progress and to sound fiscal management by the Foundation's financial team and advisors. Income from the fund is allocated among the three local land trusts.

With stewardship expenses appropriately funded, conserved lands will remain open to the public and safe for outdoor recreation while healthy ecological functioning is maintained.

To further support the local land trusts' increased responsibilities, more than \$120,000 has been distributed to the three land trusts to support their ability to grow and create the necessary capacity to address the region's need for more land protection.

Looking Ahead

The coalition remains strong. We have substantially exceeded our \$10 Million goal, and these funds will continue to be expended.

We have twenty parcels of land representing approximately 2,000 more acres to purchase in the next three years.

More parcels of land have been identified for protection that are not yet funded.

We will continue to seek funding from state and federal sources to purchase additional land, and to work with the six towns, their planners and boards to promote the importance of conservation planning and regional planning.

These remain challenging times for our six communities as we struggle to balance rapid growth and development in our towns with the need to protect water quality, wildlife habitat, recreational and scenic resources, and the overall quality of life of our citizens.

In the meantime, we can take pride in knowing that we have already taken action, and have saved an oasis of forested land, open spaces, and majestic views. We recognize that we must continue to be diligent in our work so that wild creatures can continue to thrive in their habitats, and our waters remain clean and healthy. We are all partners in providing this legacy to future generations.

The Challenge Continues...



As part of the MtA2C Campaign, a stewardship endowment has been established supporting the care of lands protected by MtA2C.



Exploring the pristine upper reaches of the York River.



We are all partners in providing this legacy to future generations.

To those who have enabled us to achieve this remarkable success, we thank you:

- Mt. Agamenticus to the Sea Coalition Partners**
- U.S. Fish & Wildlife Service/Rachel Carson National Wildlife Refuge
- Wells National Estuarine Research Reserve
- Maine Department of Inland Fisheries and Wildlife
- The Trust for Public Land
- The Nature Conservancy
- Maine Coast Heritage Trust
- Great Works Regional Land Trust
- Kittery Land Trust
- York Land Trust
- York Rivers Association

- A special thanks to our Honorary Tri-Chairs**
- Marion Fuller Brown
- Elizabeth (Libby) Delano (deceased 2005)
- Tin Smith



"Guard the Future." —Mary McIntire Davis, easement donor

We are proud to support the Mount A to the Sea Conservation Initiative in its goal to preserve and protect the natural beauty of our community.

CONNECTING ALL LOCATIONS:
1-800-339-6573
www.kennebunksavings.com



Kennebunk Savings Bank
MEMBER FDIC
Building Community Since 1871

KENNEBUNK SAVINGS FINANCIAL CENTERS

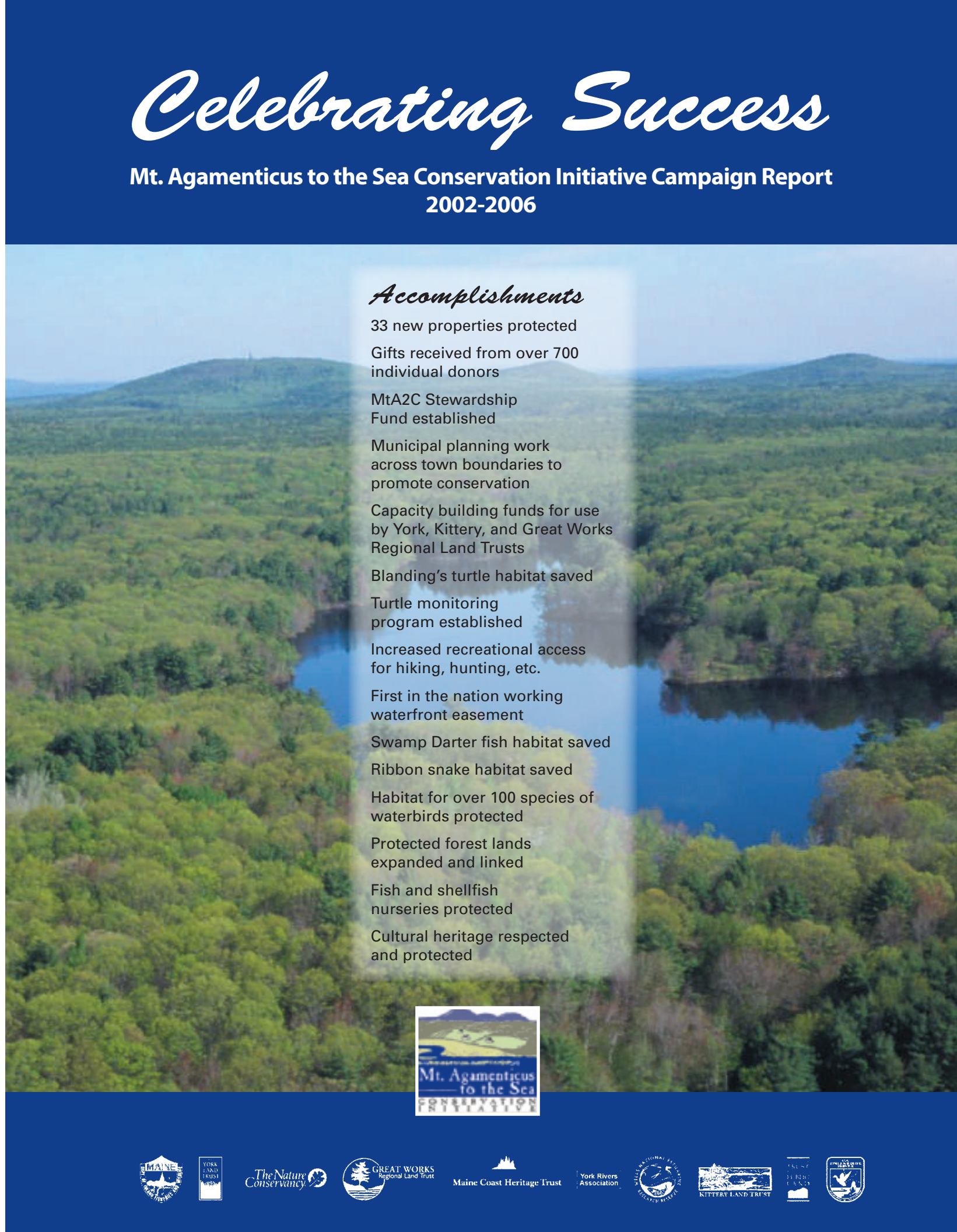
KENNEBUNK & YORK

OTHER LOCATIONS:

BERWICK • BIDDEFORD • ELIOT
KENNEBUNK (MAIN ST. & LOWER VILLAGE) • KITTERY
NORTH BERWICK • OGUNQUIT • SANFORD • WELLS
YORK (WOODBRIDGE RD.)

"When we try to pick out anything by itself, we find it hitched to everything else in the Universe."

John Muir



Celebrating Success

Mt. Agamenticus to the Sea Conservation Initiative Campaign Report 2002-2006

Accomplishments

- 33 new properties protected
- Gifts received from over 700 individual donors
- MtA2C Stewardship Fund established
- Municipal planning work across town boundaries to promote conservation
- Capacity building funds for use by York, Kittery, and Great Works Regional Land Trusts
- Blanding's turtle habitat saved
- Turtle monitoring program established
- Increased recreational access for hiking, hunting, etc.
- First in the nation working waterfront easement
- Swamp Darter fish habitat saved
- Ribbon snake habitat saved
- Habitat for over 100 species of waterbirds protected
- Protected forest lands expanded and linked
- Fish and shellfish nurseries protected
- Cultural heritage respected and protected

