

The Pingree Forest Partnership



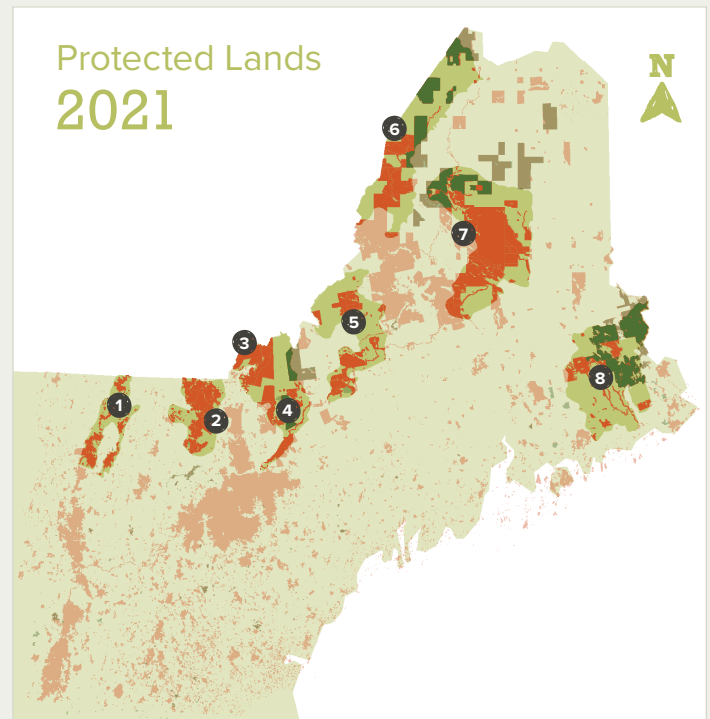
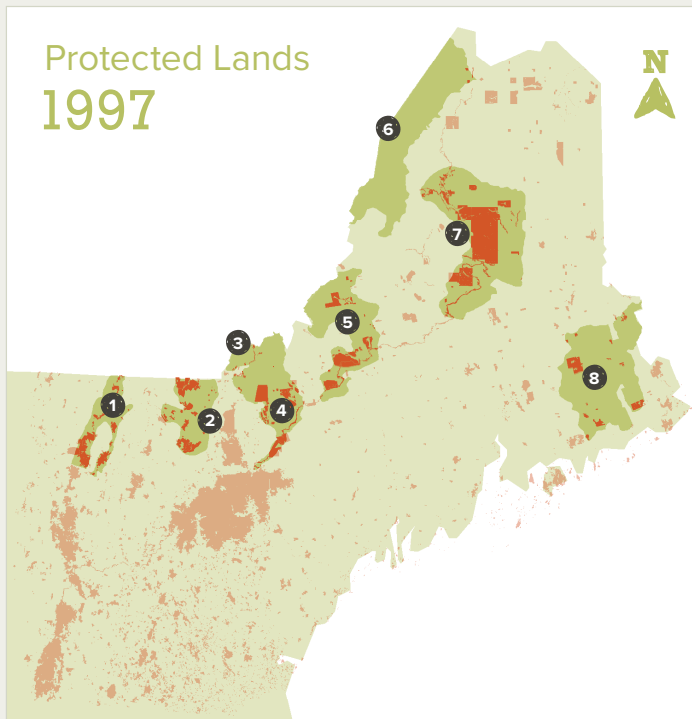
In March 2001, NEFF and the Pingree family completed the largest forestland conservation easement in the history of the United States. The project permanently protects 762,192 acres from development.

Larger than the state of Rhode Island, the Pingree easement conserves some of the most spectacular natural resources in Maine, including the Allagash Lakes and 16 miles along the St. John River. The easement also protects portions of the Cupsuptic, Black, Little Black, St. John, Machias, and Aroostook Rivers, as well as Upper Richardson, Kennebago, Munsungan, Loon, Caucomgoc, Eagle, Chamberlain, Allagash, Mooseleuk, and Churchill Lakes. The forests contain

numerous active Bald Eagle nests, 24,800 acres of managed deeryards, 72,000 acres of wetland habitat, Maine's most productive Peregrine Falcon nesting area, and at least 67 rare and endangered plant sites.

Steve Schley, president of Pingree Associates, Inc., agents for the Pingree family, said, "The family is very pleased to have worked with New England Forestry Foundation to conserve this magnificent Maine forestland. Now we can move forward with our primary objective of managing our forests sustainably, and contributing to the forest economy of Maine." The Pingree forest was the first in the world to be "Green Certified" by two independent third-party certifiers.

A broad coalition formed among the state's various conservation, sporting, and business organizations to support the purchase of the Pingree easement. Participants included the Forest Society of Maine, Sportsmen's Alliance of Maine, Maine Audubon Society, Northern Forest Alliance, Chewonki Foundation, Maine AFL-CIO, Maine Forest Products Council, Maine Professional Guides, Natural Resources Council of Maine, Rangeley Lakes Heritage Trust, Ducks Unlimited, Maine Appalachian Trail Club, Maine Coast Heritage Trust, Maine Council of Trout Unlimited, Maine Snowmobile Association, Maine Sporting Camp Association, Maine State Chamber of Commerce, Businesses for the Northern Forest, and the Maine Tourism Association.



0 20 40 80 120 160 Miles

- Northern Forest Alliance (NFA) Proposed Wildlands
- NEFF Conservation Easements**
- Within NFA Proposed Wildlands
- Outside NFA Proposed Wildlands
- Protected Lands (GAP Status 3 or Better)**
- Within NFA Proposed Wildlands
- Outside NFA Proposed Wildlands

- 1** Northern Green Mountains
- 2** Nulhegan River & Victory Basin Watershed
- 3** Connecticut River Headwaters
- 4** Upper Androscoggin Valley
- 5** Western Mountains
- 6** Upper St. John River Valley
- 7** Greater Baxter State Park
- 8** Down East Lakes

In 1997, the Northern Forest Alliance (NFA) identified 10 large and high-priority landscapes for conservation—called "Wildlands"—and mapped their already conserved and still-in-need-of-conservation acreage. NEFF has updated the NFA maps to show how much land has been protected in these areas over 24 years. NEFF's multi-location Pingree easement has contributed to three of the landscapes (3, 6, 7), and its Downeast Lakes Forestry Partnership easements to one landscape (8).

Maps created by Jennifer Shakun. Thanks to David Publicover of the Appalachian Mountain Club for providing the maps' historic protected lands data and the Wildlands boundaries. Current protected areas data obtained from the Maine Office of GIS, NH GRANIT, and VT Center for Geographic Information.